



70 Darenth Road

, London, N16 6EJ

Asking price £900,000

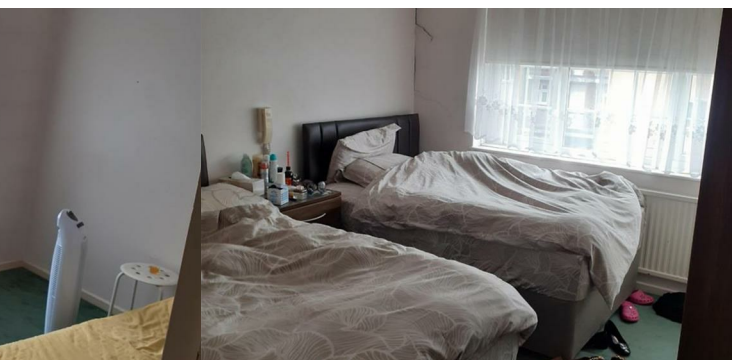
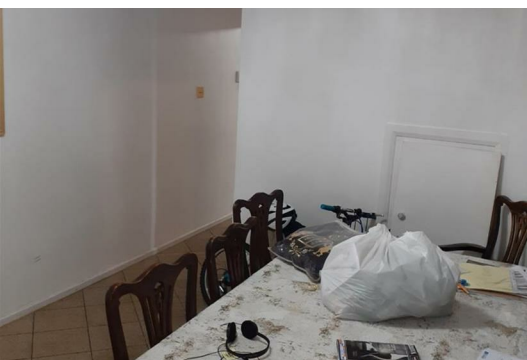


Nestled on the charming Darenth Road in London, this delightful mid-terrace house offers a comfortable living space of 1,109 square feet, perfect for families or professionals seeking a welcoming home. The property boasts a well-designed layout that maximises space and light, creating an inviting atmosphere throughout.

As you enter, you are greeted by a warm and airy hallway that leads to a spacious living area, ideal for relaxation or entertaining guests. The kitchen is thoughtfully appointed, providing ample storage and workspace for culinary enthusiasts. With its practical design, it seamlessly connects to the dining area, making mealtimes a pleasure.

The upper floors feature generously sized bedrooms, each offering a peaceful retreat at the end of the day. Natural light floods through the windows, enhancing the sense of space and comfort. The bathroom is well-equipped, ensuring convenience for all residents.

Outside, the property benefits from a modest garden, perfect for enjoying the fresh air or hosting summer barbecues. The location on Darenth Road is particularly advantageous, with excellent transport



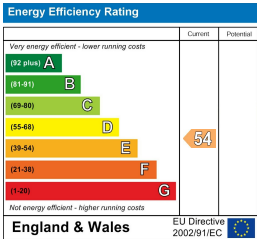
Area Map



Floor Plans



Energy Efficiency Graph



These particulars, whilst believed to be accurate are set out as a general outline only for guidance and do not constitute any part of an offer or contract. Intending purchasers should not rely on them as statements of representation of fact, but must satisfy themselves by inspection or otherwise as to their accuracy. No person in this firms employment has the authority to make or give any representation or warranty in respect of the property.